

'Different People, Different Needs'

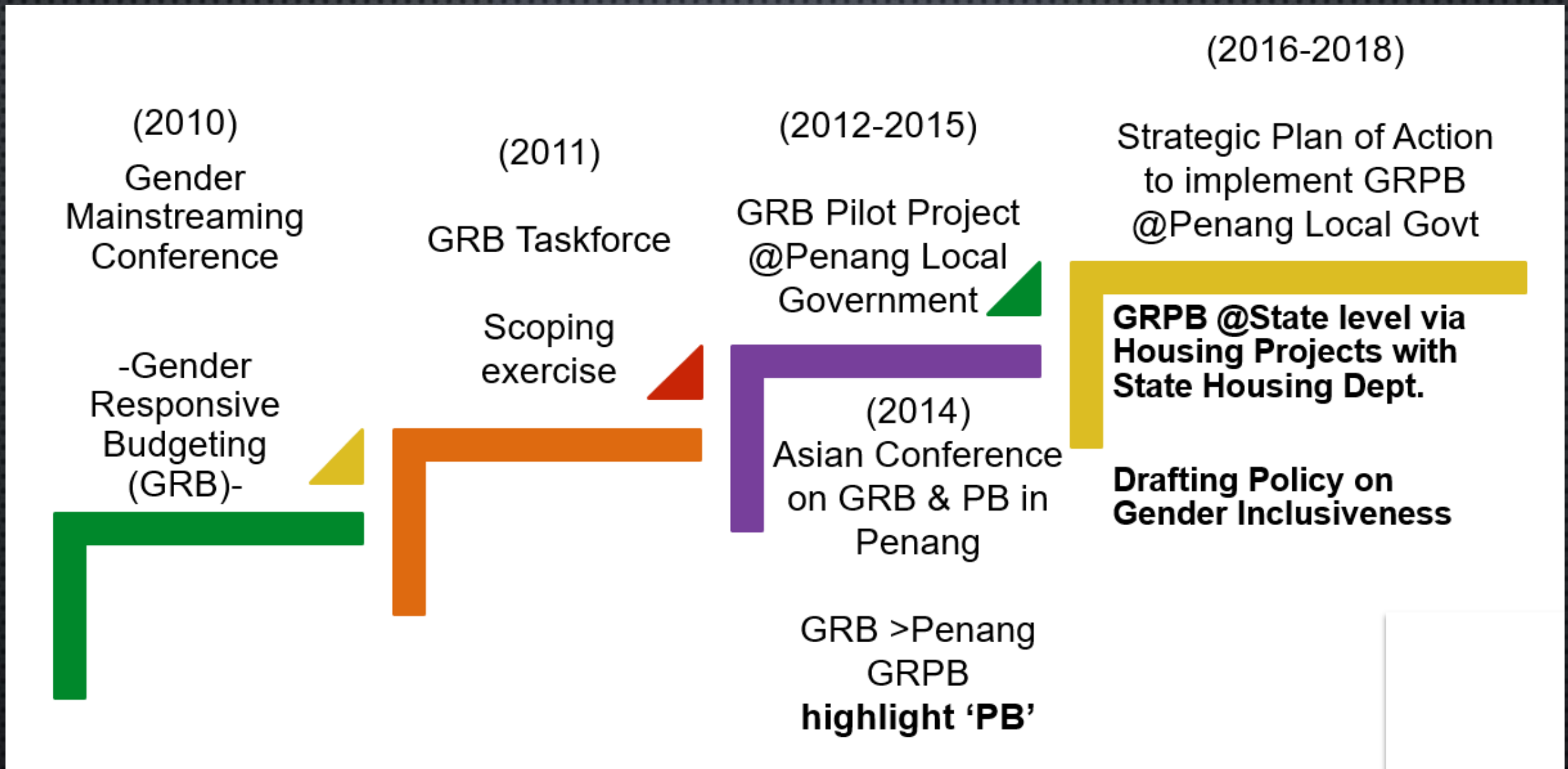
BUDGETING BY INCLUSION

GENDER RESPONSIVE & PARTICIPATORY BUDGETING IN PENANG

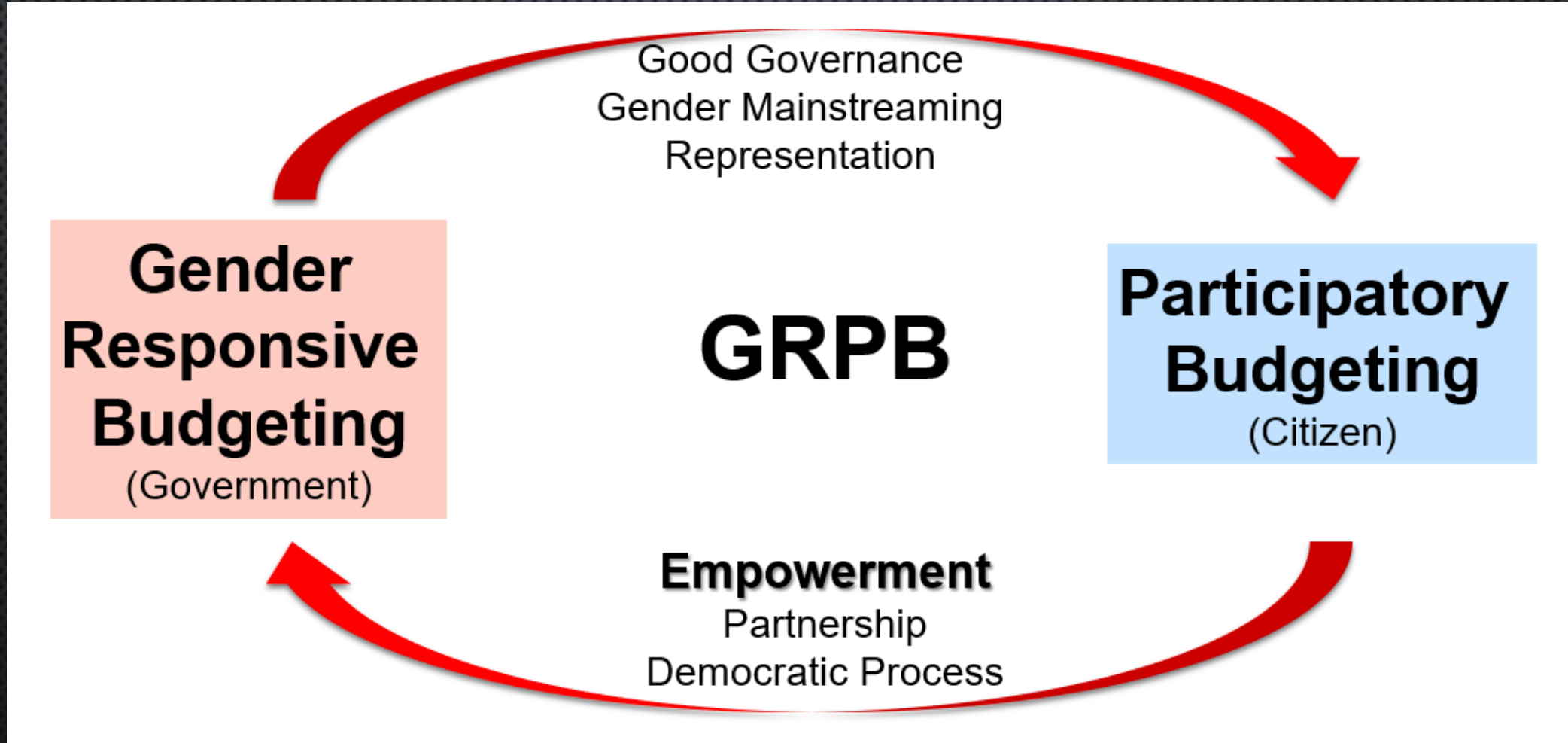
IOPD 2018



How it was started & where we are now...

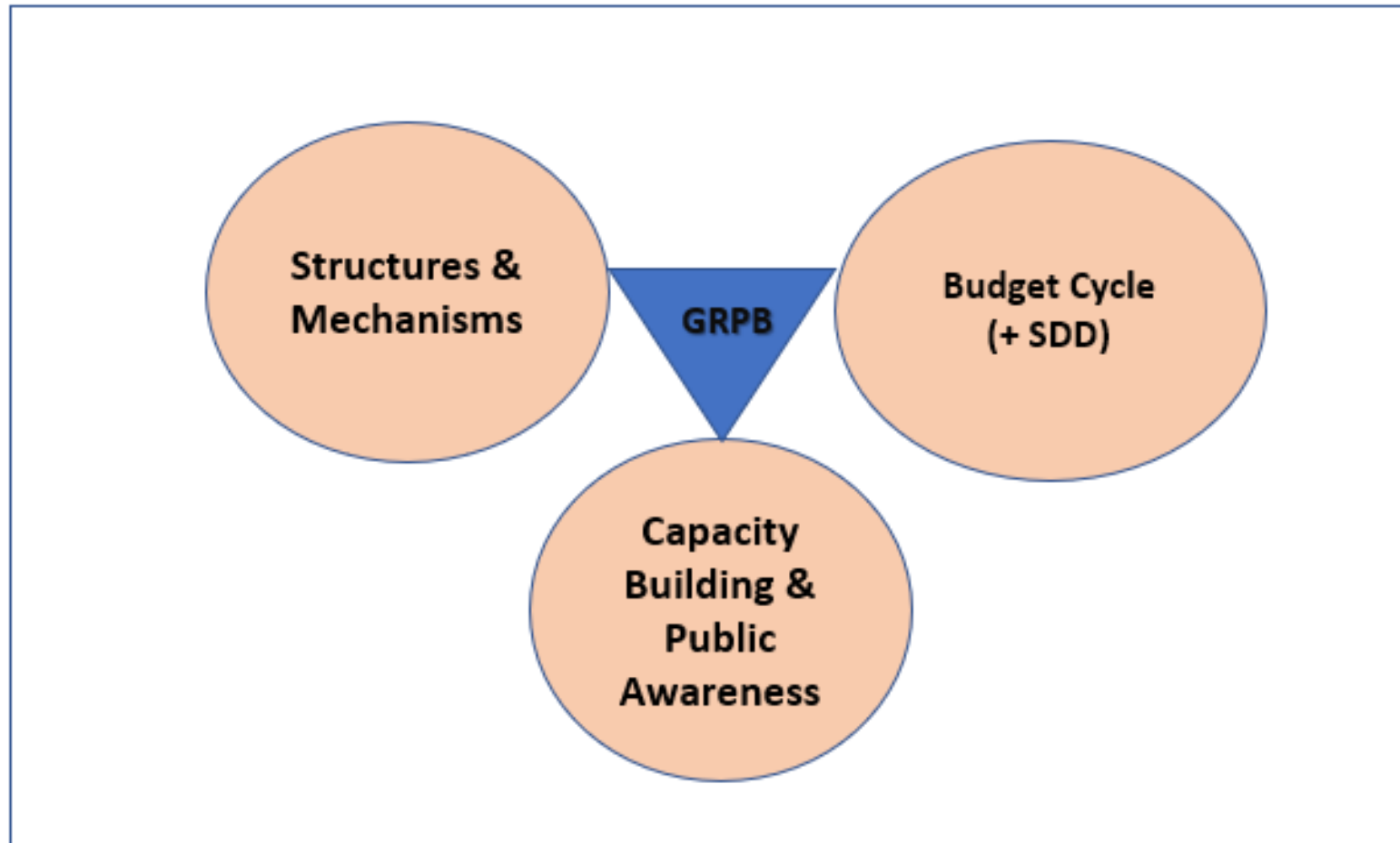


GRPB – The Penang Model



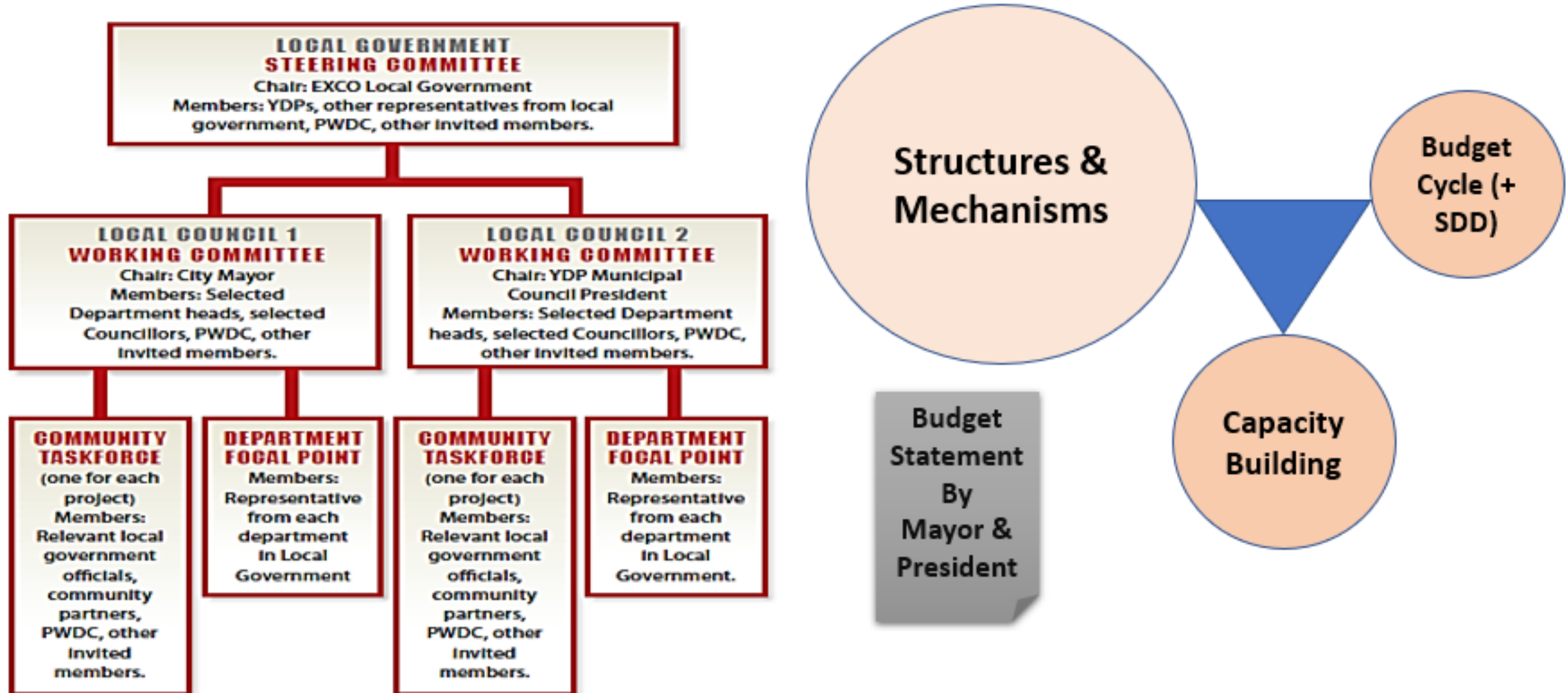
Framework on Institutionalising Gender Responsive & Participatory Budgeting (GRPB) in Penang

Framework on Institutionalising GRPB



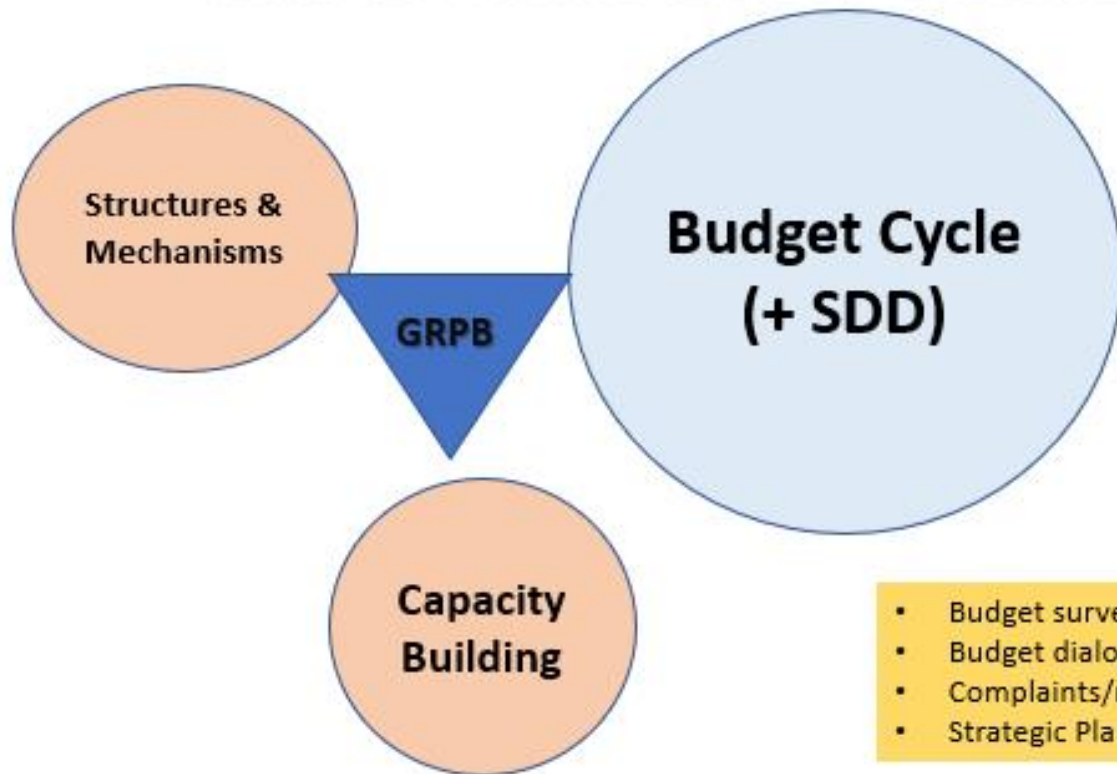
GRPB – Structures & Mechanisms

GRPB in the Local Councils of Penang 2012 - 2018



GRPB – Government Budget Cycle & Collection of Data

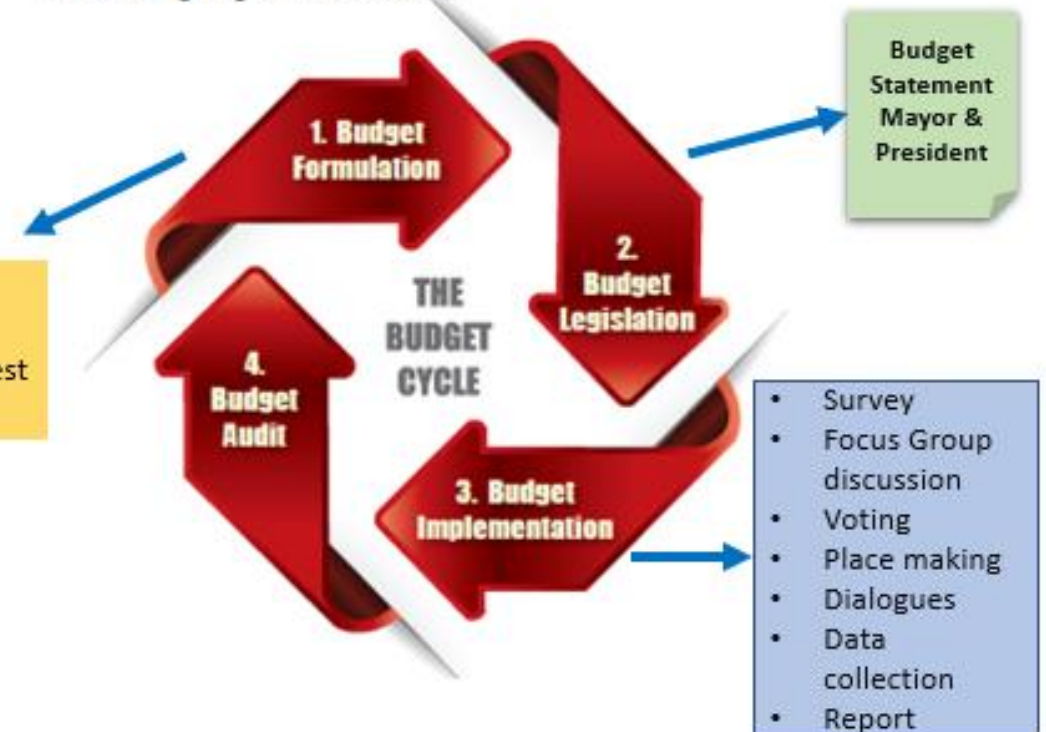
GRPB in the Local Councils of Penang 2012 - 2018



- Budget survey
- Budget dialogue
- Complaints/request
- Strategic Plan

INTEGRATING GRPB INTO THE BUDGET CYCLE

A key part of the institutionalisation of GRPB is that we see and take the opportunities for GRPB to contribute at each stage of our budget cycle. The following diagram illustrates this:



- Survey
- Focus Group discussion
- Voting
- Place making
- Dialogues
- Data collection
- Report

GRPB in the Local Councils of Penang 2012 - 2018

Knowledge:

- Key concepts
- Gender-aspects in departmental areas

Awareness :

- Sensitivity and Motivations

Application Skills:

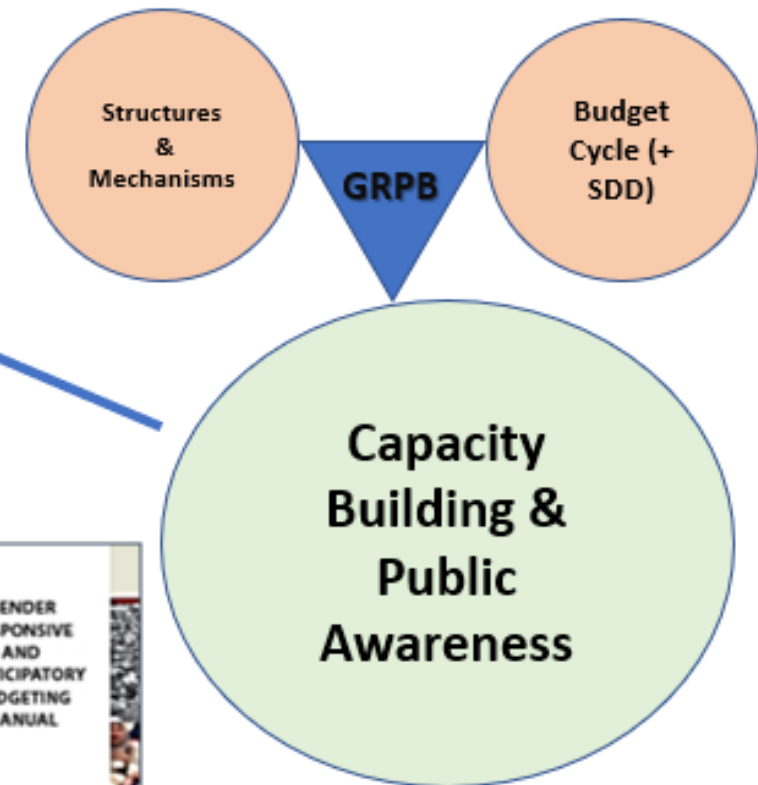
- How to integrate into working routines – checklists



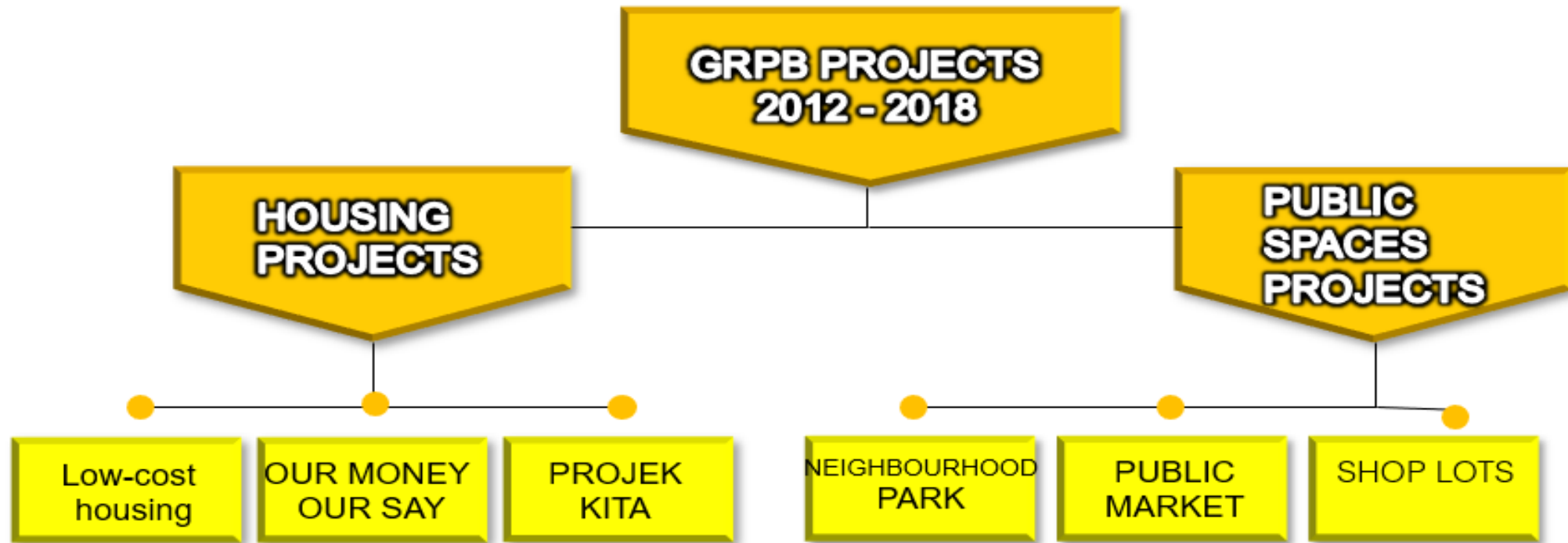
- Conference
- Workshops
- Meetings
- Study visit
- Presentations at local & international
- Awards 2014 & 2018

- ### Publications
- Manual
 - Booklets
 - Leaflets
 - Videos

- ### Social media
- online & offline



Examples of initiatives



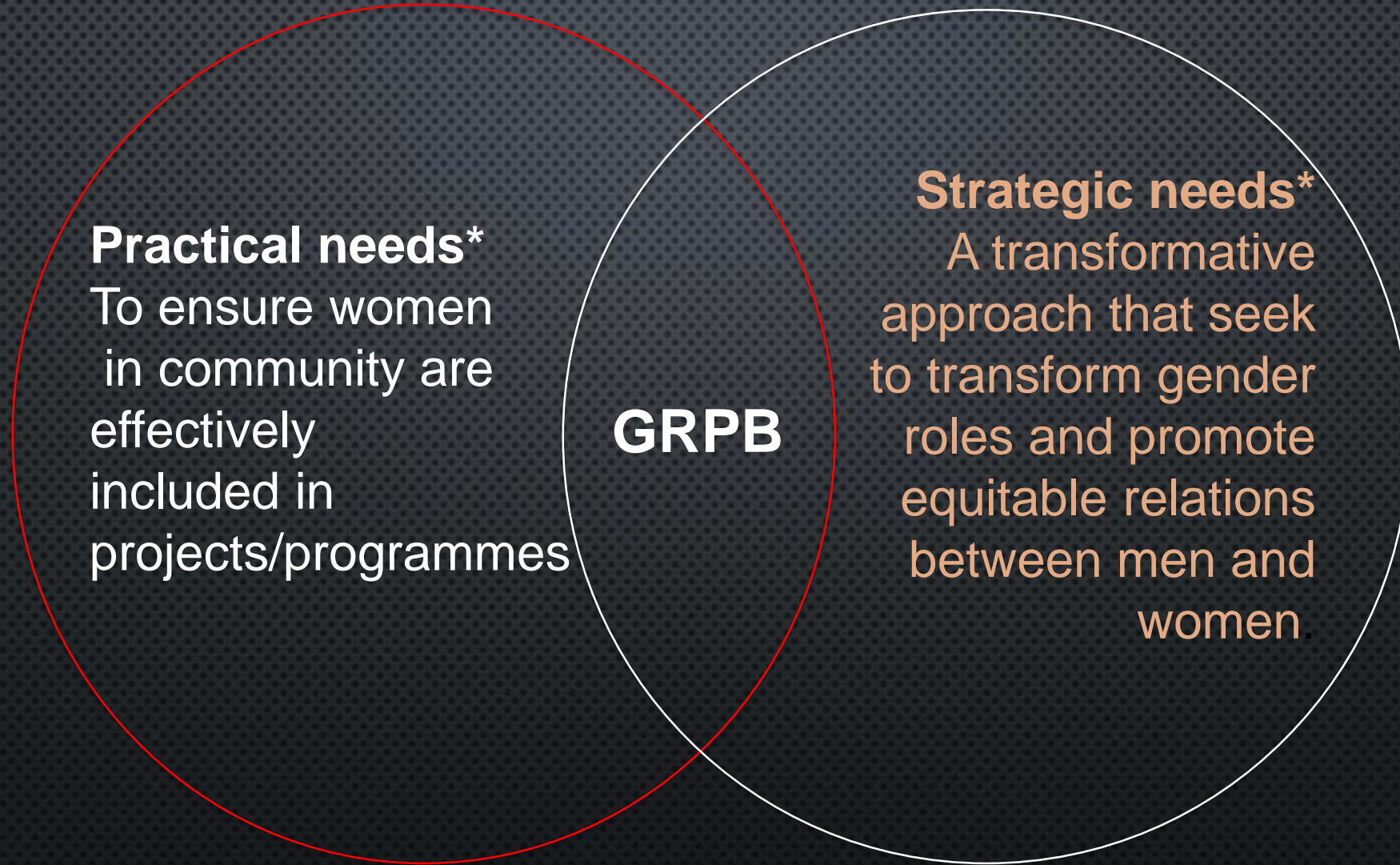
● PROJECTS:

1. PPR Jalan Sungai, Sungai Pinang
2. PPR Ampangan, Permatang Pauh
3. Kampung Sungai Chenaam, Nibong Tebal
4. Taman Teluk Indah, Perai
5. Machang Bubuk, Bukit Mertajam
6. PPR Desa Wawasan, Bukit Mertajam
7. Pulau Aman

● PROJECTS:

1. Taman Kenari, Sungai Ara
2. Taman Tunku, Seberang Jaya
3. Pasar Lebu Campbell, Georgetown
4. Lot-lot Kedai, Flat Taman Sri Pinang
5. PPR Jalan Sungai, Sungai Pinang

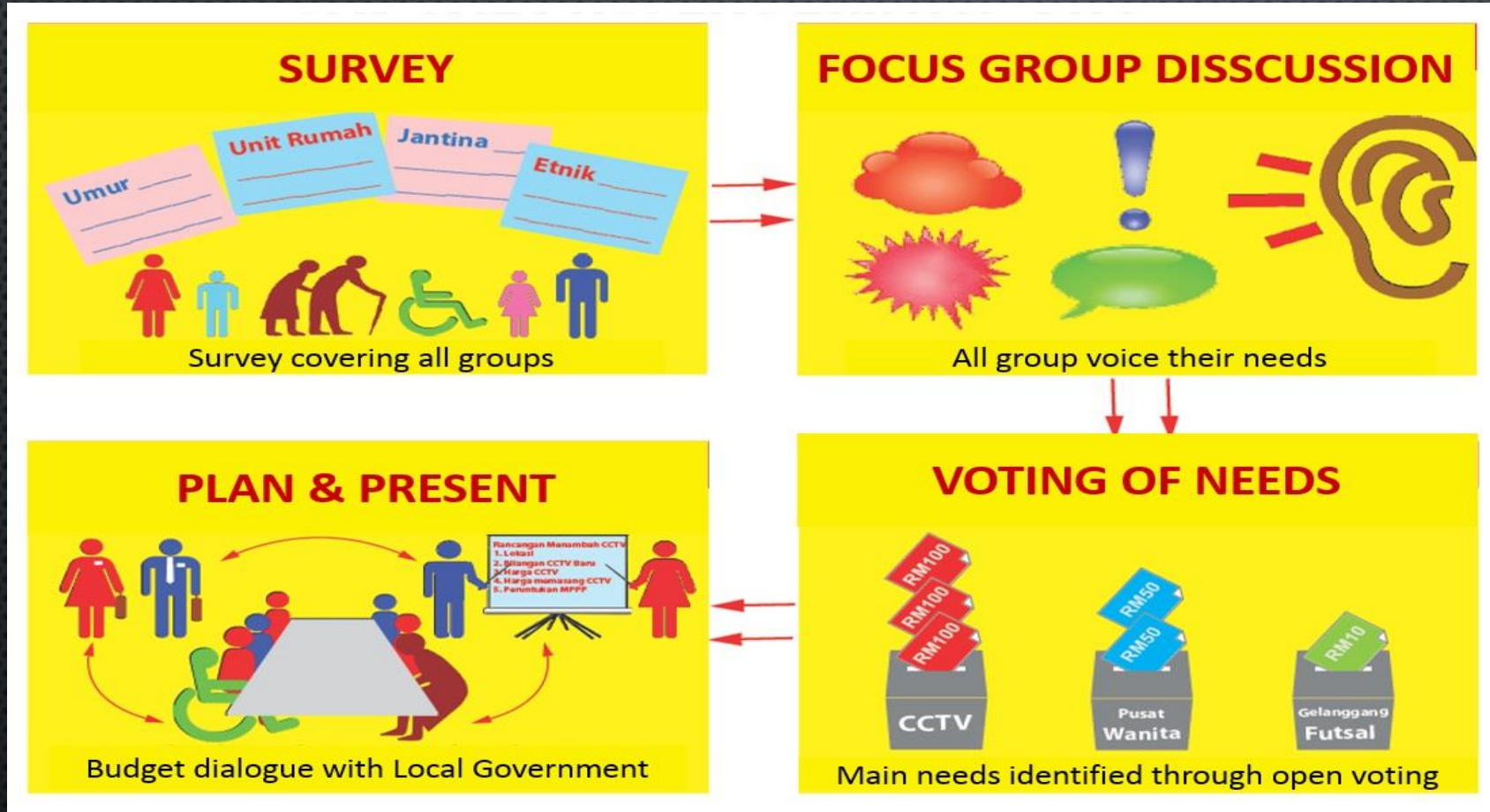
GRPB @Community



***with the awareness of intersectionality in society – gender, ethnicity, class, ability, etc.**

Source: Moser, 1999

Method: meeting practical & strategic needs through participatory engagement



‘Leaving no one behind’

Collection of Disaggregated Data

Challenges & Limitations

- No Act/Policy at Federal or State level on Gender Equality/GRPB (we have budget circular at federal level)
- Slow implementation in Government. Not a priority (despite there is commitment to implement GRPB)
- Government staff lack of knowledge and skills on GRPB (we have on-going capacity building session with them.)
- Low demand from the public (not aware)

Budgeting by Inclusion: Why it is important?

Research: the impact of GRPB on community

Location: PPR Jalan Sungai & PPR Ampangan

A **Qualitative research**, snowballing technique

- **Focus Group Discussion:** 12 groups (6 each location)
- **Face-to-face Interview:** 41 residents
(women 21, men 7, youth 5, disabled 5, senior citizen 3)

Researchers from the **Centre of Research on Women and Gender (KANITA), Universiti Sains Malaysia (USM), Penang**

Why PPR Jalan Sungai & PPR Ampangan?

Pilot project 2012...to evaluate the impact of GRPB after 5 years...

Projects & activities with the residents since 2012-present:

Practical Needs

- ✓ **Projects - community contract** on cleanliness & safety, **infrastructure, recreational park, beautifying the flats**
(PPR Jalan Sungai)
- ✓ **Community program & income generating project:** catering & '*Projek Kita*' (Our Projek)
- ✓ **Social gatherings** – cultural, festivals

Strategic Needs

- ✓ **GRPB Process** – participatory, space to express opinions on needs
- ✓ **Awareness-building** – VAW (with WCC)
- ✓ **Education for kids through arts**
(with Arts-Ed)
- ✓ **Capacity development** – leadership, skills (WEL, WEE)
- ✓ **Elections** for resident association **leaders**
- ✓ Invited to **participate** in **PWDC awareness activities:** IWD, PGO

Findings: the impact of GRPB on community

Feeling empowered through participatory / bottom-up process
'I have the right to express what I need & it became a reality!'

Better image to outsiders

Income creation

- **cleanliness & safety program**
- **'Projek Kita' (*Our Project*)**
- ***-equal opportunity for women & men***

Sense Ownership & Pride

Bonding within community

Bridge the local government & community

Women visibility in leadership
Eg. Resident association

Findings on the impact of GRPB on women

- **Self-realisation** of their **capacity to contribute positively** to their **community**
- **Self- satisfaction** for **active involvement** in community and their **collective work**
- **Improved livelihoods** with **skills** they learned for **job creation** and **sustainability**
- Enable to **engage** with other stakeholders **confidently**
- GRPB approach provides an **enabling environment** for women to **participate** in **public sphere**, **taking-up leadership roles in committee.**

Findings on the impact of GRPB on men

- Men see only women need **'empowerment'** for women only
- Recognise importance of **strong leadership** to make GRPB happens
- **Supportive** of women involvement at community.
- **Recognise** women's contribution in community, however expressed limitation of women to become leaders due to limited networks and capabilities.

Thank you!

