

Virtual Seminar: Contributions of Participatory Budgeting to climate change mitigation and adaptation



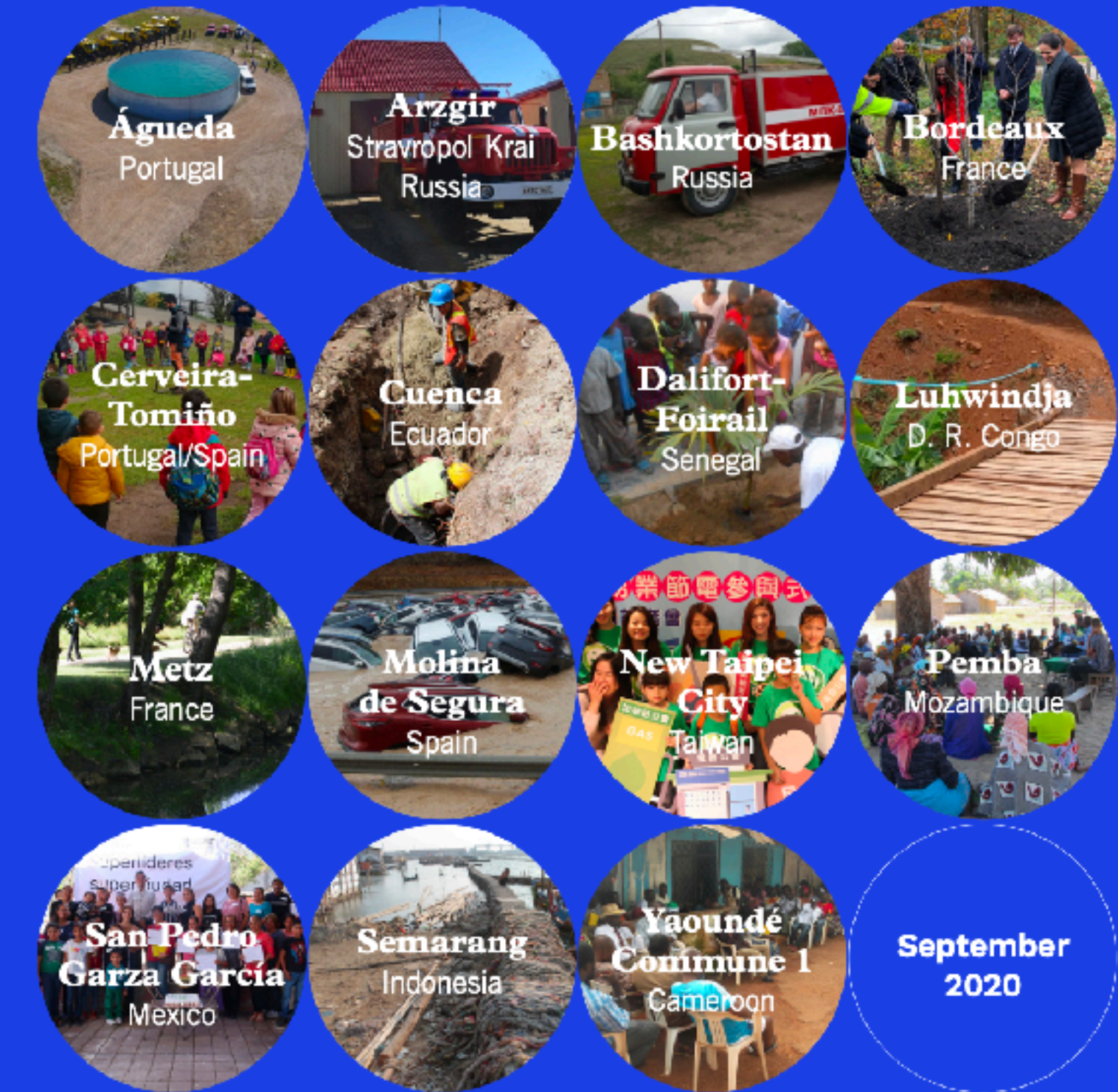
Presentation of the study's main findings

Prof. Yves Cabannes, UCL / DPU

April 20, 2021

Contributions of Participatory Budgeting to climate change adaptation and mitigation

Current local practices around the world & lessons from the field



1. Participating cities: diverse sizes and types, across regions; multiplicity of climate-sensitive PB practices

- Different time line and consolidation

20 years [Cuenca], over 10 years [Semaramg, Arzgir, Dalifort], many new and very new ; and some interrupted [Metz]

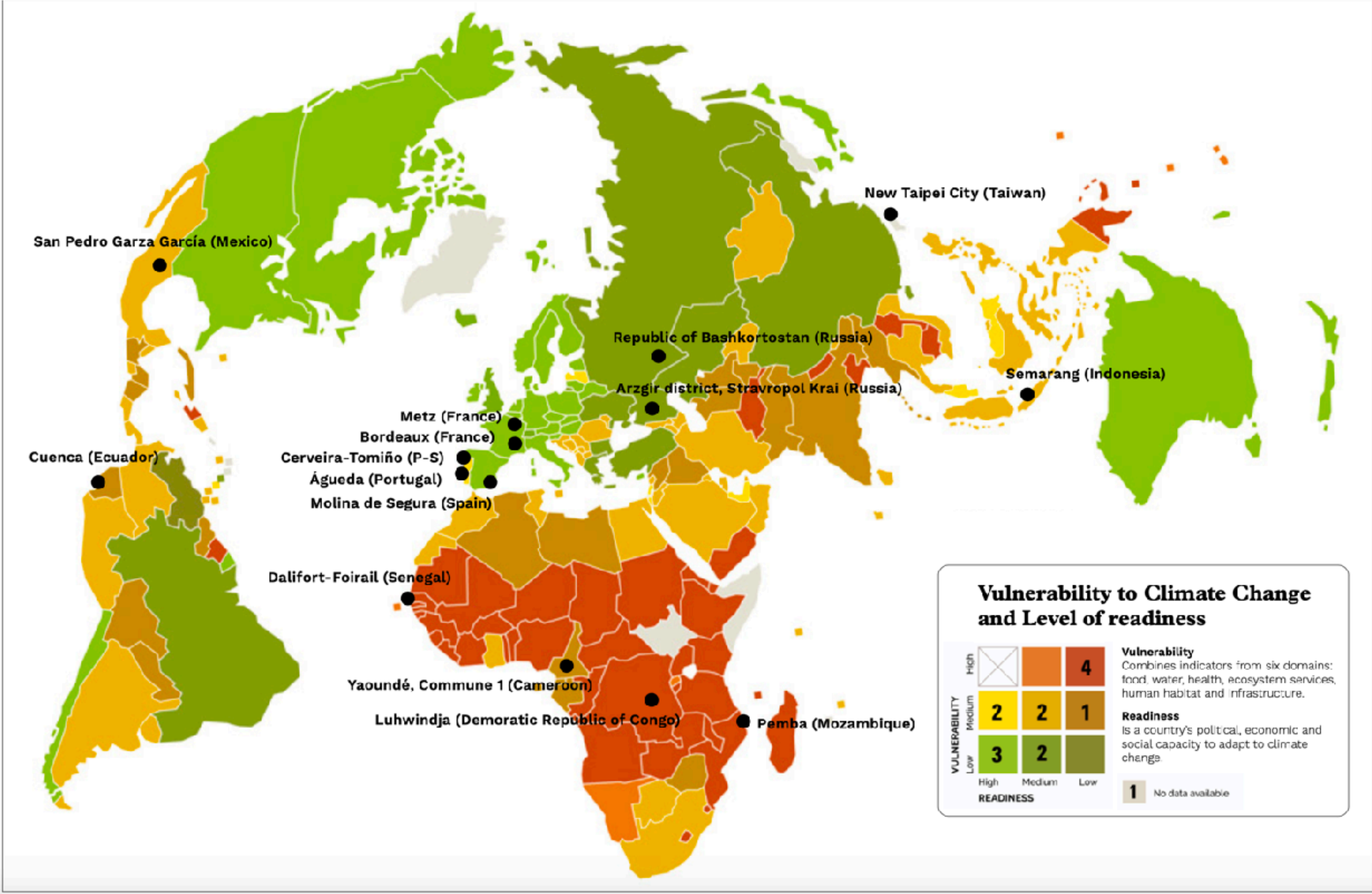
- Different types of PB

- Dominantly space-based: districts, villages, bi-national cities, metropolis, Regions, rural parishes

- Emergence of Thematic / Sector PB: Eco-citizen PB; PB for sustainable development; BP for ecological / energy transition ;

- New generation of mixed cases: Sector + Actor

- Green PB in Schools (Lisbon)
- Youth PB for Climate change [Molina de Segura]
- Energy Saving PB : [a] in private enterprises and their employees and [b] communities (2 districts in New Taipei City)



2. Climate-sensitive PBs are the result of the dramatic effects that populations suffer from

- Most frequent: **flooding** (heavy rains + sea and river-rise)
- Wildfire, heat waves, heat islands, Typhoons
- Usually combination of effects [ex Agueda]
- Driven by the need to **address the very specific & multiple effects of climate change**, rather than by international agendas or programmes



3. Diverse, multiple and highly tailored responses to immediate needs. 1/2

A significant contribution to the effects of climate change

- In 11 cities, many of them neither particularly rich nor particular large, over 900 approved projects [4.400 scrutinized],
- > 22 million \$ over 2 years : investment
- Highly variable: a couple of % to 100 %
- Number of projects variable : less than 10 / year up to > 100 (Cuenca 514, Metz 120, S. Pedro 185)
- 6 Types of projects : **key lesson**

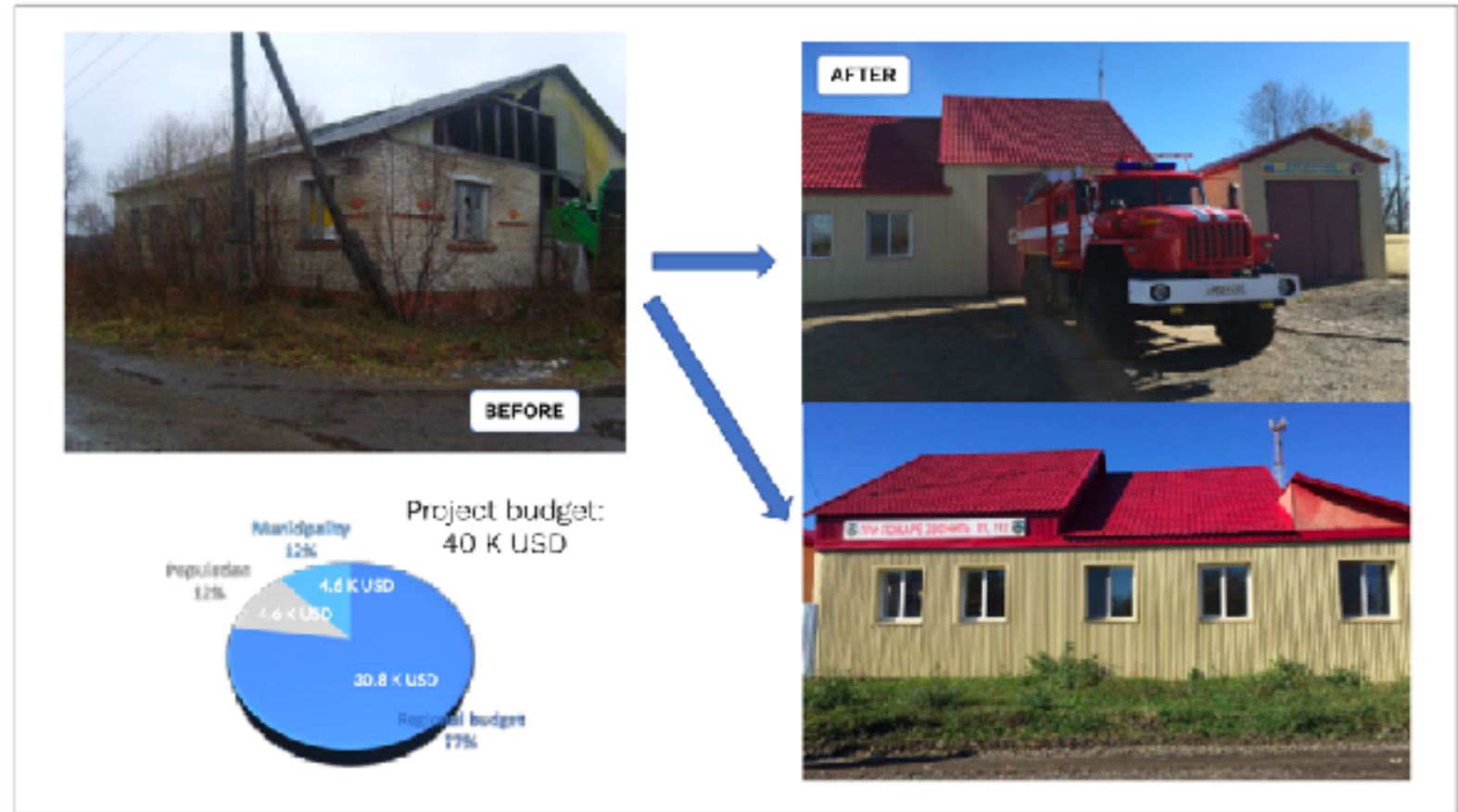
[1] Tangible Climate adaptation projects

[2] Tangible Climate mitigation projects

[3] Tangible Climate adaptation + mitigation projects



Picture 24. Fruit tree planting, FB project to "green" a mineral city © Bordeaux Municipality



[2] Mitigation>

< [3] Adaptation + Mitigation

< [1] Adaptation



3. Diverse, multiple and highly tailored responses to immediate needs. 2/2

A significant contribution to the effects of climate change



Pictures 26. Cerveira-Tomiño, Portugal / Spain. Example of “soft” PB project: one-day artistic workshop with recyclable material for young people. © Tomiño Municipality



Picture 29 & 30. New Taipei City, Taiwan. Example of “soft” PB projects, funded through a unique thematic energy conservation PB: transforming the vendors to an energy-saving promotion hub (left); combining biking with the energy-saving promotion (right) © New Taipei City Government

4. Raising awareness and training in the field of climate

5. Community based early warning projects

6. CC studies and information system

2019, Molina, public electric consumption study to curb consumption

Despite their innovative aspects , not more difficult or leather to implement ! Another good lesson.



Picture 31. San Pedro, Mexico. An alert on contamination PB project, using ICT, allows community to be informed in real-time about air contamination levels. © Yves Cabannes

4. Multiple Innovations in various fields, often poorly documented > Need to be done

- Participation dimension
- Fiscal and budgetary dimension
- Regulatory and institutional dimension
- Climate and spatial justice dimension



Picture 37. Semarang, Indonesia. Community-based disaster preparedness meeting. Active role of local NGOs © Kota Kita



Picture 35. Neighbourhood Forum to identify PB priorities, Yaoundé Commune 1. Neighbourhood PB committees known as CADEL are actively involved in these activities. © Yaoundé 1 Commune



Picture 36. The "Eco-Workshop" is a 10 sessions PB activity in public spaces, part of the "Drivers united for change" project. Here, neighbours proudly show off their certificate of participation. © San Pedro Municipality

5. Challenges for the future: how to upscale and increase the impact of climate-sensitive PBs?

- **Significantly increase support**
 - > Expand towards 6000 + cities that practice PB
 - > Better document local *know-how* [Volatility, Ex. Metz]
 - > Supporting innovation in practising cities
- **Mobilize and lobby** : IO / UN / Bilateral/; LG and cities associations, Regiones, Citizens and social movements
- **Climate sensitive PB are a gold mine** of unexplored solutions
 - Ej. Metz, 2014 - 2019 : 3735 proposals, 298 approved projects> What do to with the difference?
- Acknowledge the virtues of Climatic PsPs: **A thermometer and a barometer** [localised information in real time]
- **Solidarity PBs for climate justice**



Thank You !

