



# CITY FINANCE LAB

April 2021

Climate-KIC is supported by the  
EIT, a body of the European Union



The first platform in Europe to support the development of innovative, replicable, and scalable financing solutions dedicated to increasing investment in climate-resilient, low-carbon and green urban projects for sustainable cities.

Co-funders:



In partnership with:



# Activities and services



Climate-KIC

Climate-KIC is supported by the  
EIT, a body of the European Union



## Activities

1

**Technical advisory** on selected financing solutions to bring them to market



**Development and implementation of promising solutions**

2

**Capacity building** for cities and municipal finance practitioners in order to prepare stakeholders to use the solutions

3

**Knowledge sharing** activities to discuss success stories, failures, lessons learnt



**Scaling and replication across other cities**

# Scaling and replication

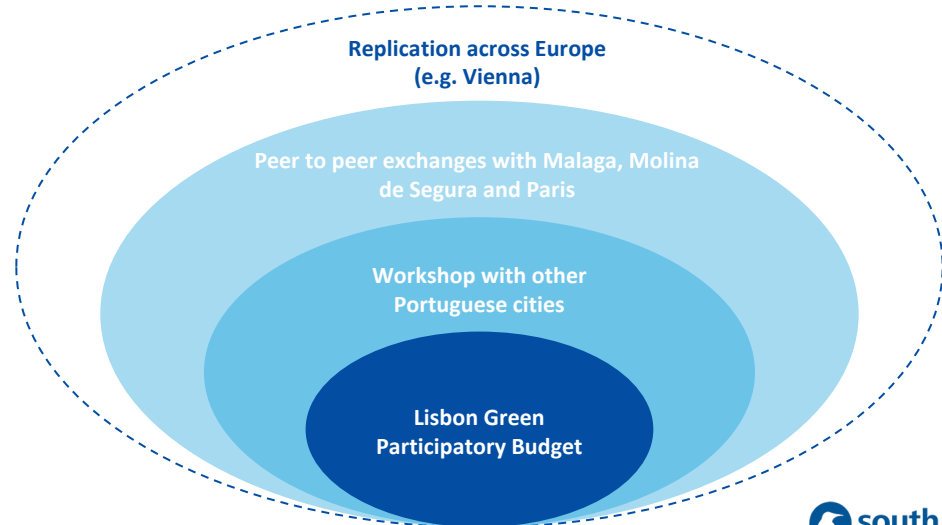
**Innovative financing  
solution**

**Knowledge sharing:**

- Presenting at events
- Organising peer-to-peer learning

Identifying appropriate  
environments for  
replication

- **Mentoring** cities in the initial phases of replication
- **Building capacity** among city administrators





# Contributions of Participatory Budgeting to climate change adaptation and mitigation

As part of its knowledge sharing activities, the CFL supported the development of this ground-breaking report with precious direct feedback from cities across the world.

## Key takeaways:

- Participatory budgets are a key opportunity to hear about citizen priorities related to climate change
  - Gold-mine to identify mitigation and adaptation needs/wants of citizens
  - “Food-for-thought” for other city departments on project types that are key to citizens
- **Awareness-raising** among local citizens and youth (such as through School PBs in Lisbon) to the comfort and livelihood benefits of climate mitigation & adaptation projects play an important role in growing support for the climate agenda.
- Many existing projects have positive impacts and should be identified as such



Climate-KIC



Climate-KIC is supported by the  
EIT, a body of the European Union



**south pole**

[www.cityfinancelab.com](http://www.cityfinancelab.com) | [cityfinancelab@southpole.com](mailto:cityfinancelab@southpole.com)



**CITY FINANCE LAB**